



Preliminary Remediation Goals (PRG) and Dose Compliance Concentrations (DCC) Calculators



Stuart Walker – walker.stuart@epa.gov, (202) 566-1148

Office of Superfund Remediation and Technology Innovation, US Environmental Protection Agency

PRG: <http://epa-prgs.ornl.gov/radionuclides>

DCC: <http://epa-dccs.ornl.gov/>

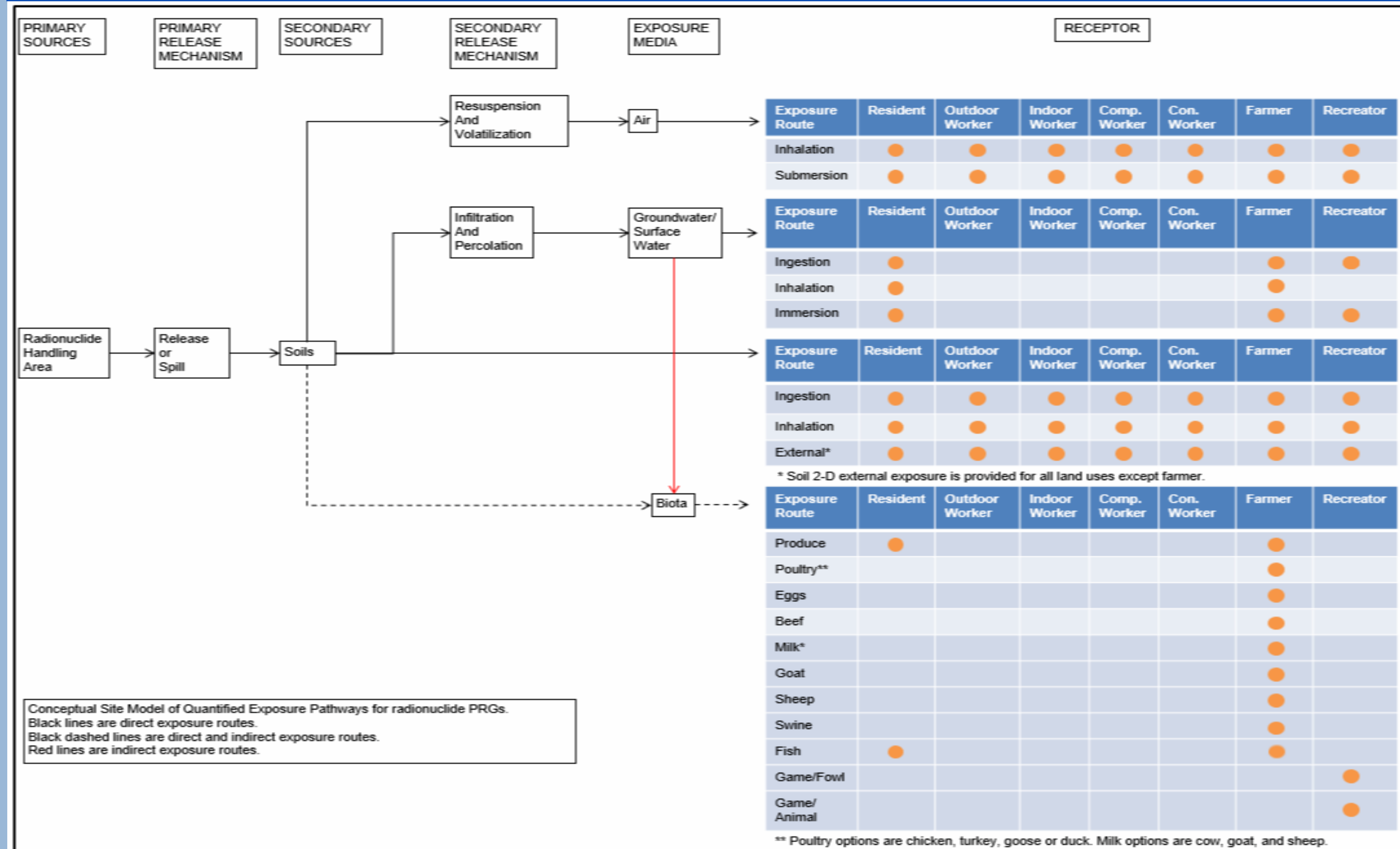
PRG Calculator

- Calculates risk-based, **preliminary remediation goals (PRGs)** for use in **radiation risk assessments** at CERCLA sites. Useful when ARARs (Applicable or Relevant and Appropriate Requirements – regulations set by governments) are not available.
- Calculates cleanup concentrations based on a target cancer risk of 1×10^{-6} , except for MCLs in soil-to-groundwater scenario.
- Not cleanup standards – used for site screening and initial cleanup goals.

DCC Calculator

- Calculates **dose compliance concentrations (DCCs)** for use in **radiation risk assessments** at CERCLA sites.
- Superfund is **NOT** a dose-based program.
- DCCs are useful for demonstrating compliance to ARARs.

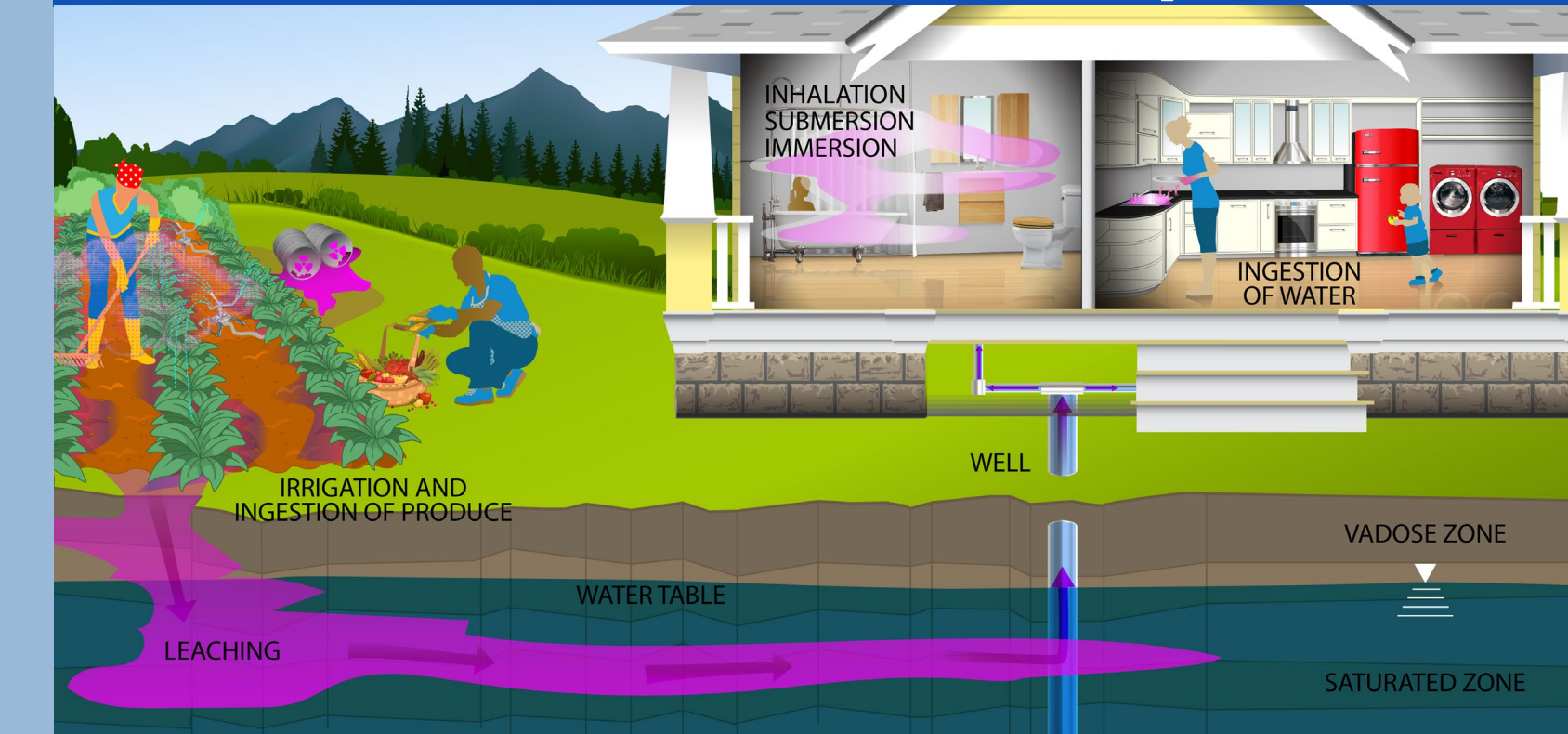
Conceptual Site Model



Using the Calculators

- Select scenario:** 7 exposure scenarios below (air and 2D scenarios not pictured).
- Select PRG/DCC type:** use default parameters or site-specific. Defaults useful for initial site assessments. If data is collected, may use site-specific data to set more accurate cleanup goals.
- Select units:** units of activity in pCi or Bq.
- Select isotopes of interest:** Select the radionuclides and/or radionuclide decay chains present at site.
- Select source and decay output options:** The calculator offers four options for calculating PRGs, including years of peak risk and secular equilibrium.

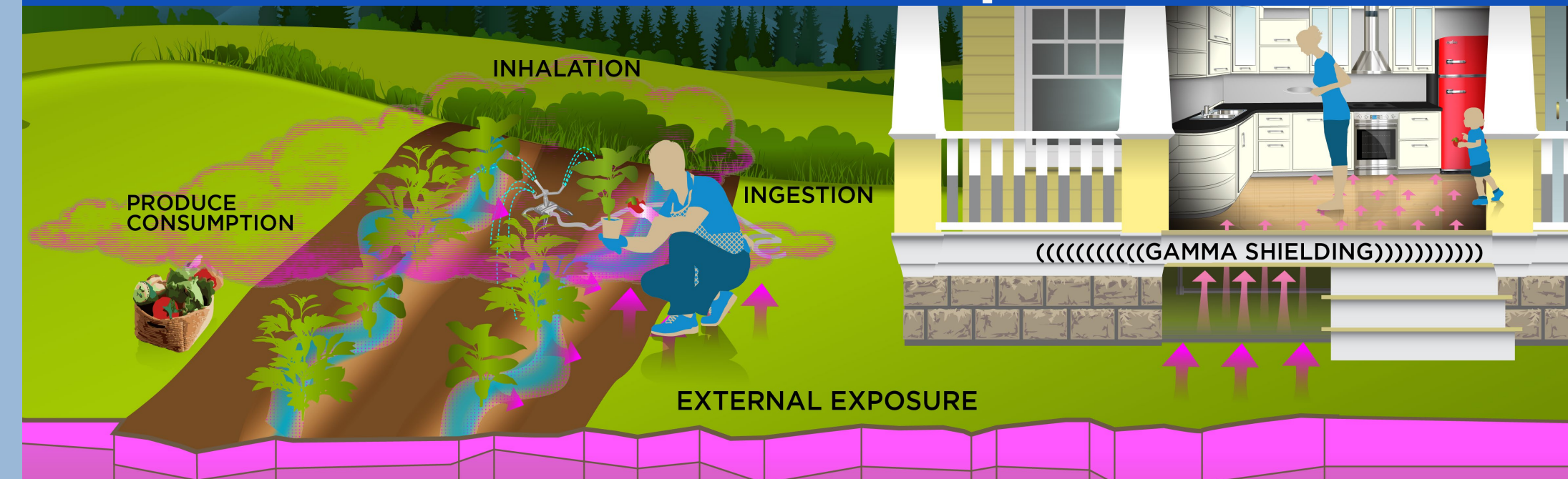
Soil to Groundwater Exposure



Outdoor (or Composite) Worker: Soil Exposure



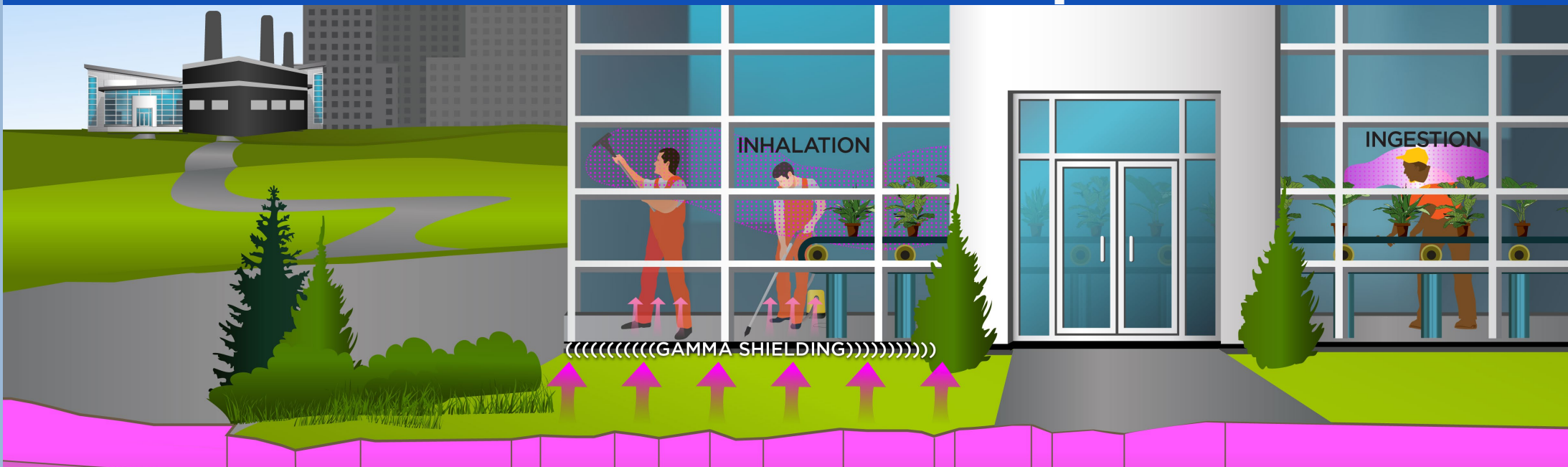
Resident: Soil Exposure



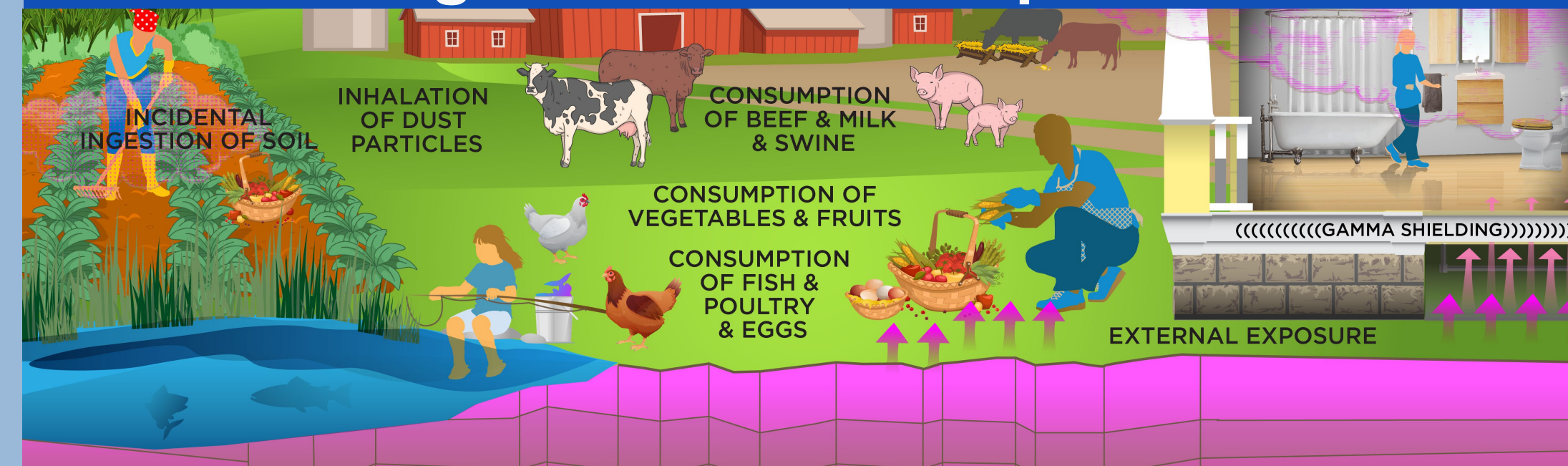
Tapwater Ingestion Exposure



Indoor Worker: Soil Exposure



Agricultural Soil Exposure



Fish Ingestion Exposure

